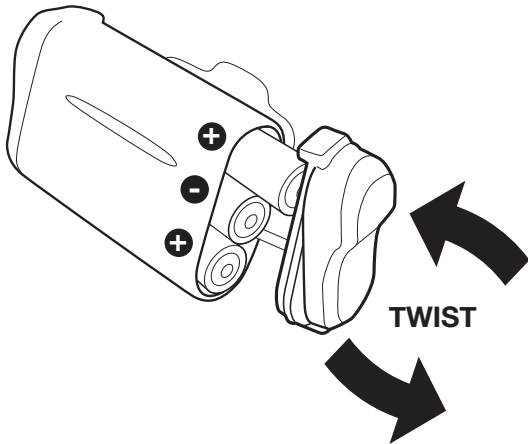


GAMMA

LED HEADTORCH

INSTALLING THE BATTERIES

The batteries are placed in the rear compartment. Simply twist the battery cover to expose the compartment. Use only AAA alkaline batteries. Although rechargeable batteries work they are susceptible to a sudden drop in useful power. Alkaline batteries have a more gradual drop which allows you to be better prepared for a loss of power. Always put in a fresh set of batteries when you are going for the big trip. It is good practice to remove the batteries for storage and transit.

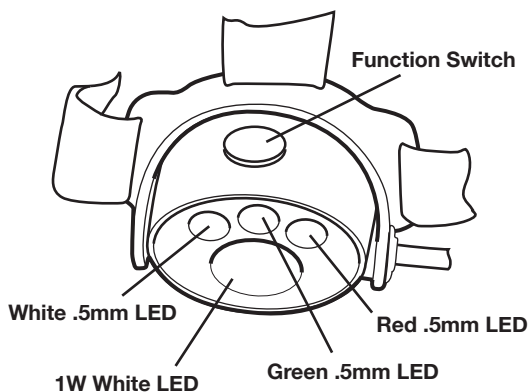


OPERATION

The Gamma Headtorch functions from a single multi operation button. This button cycles through the main beam and 3 smaller LEDs. A second switch on the battery pack operates the rear light.

1. Turn the torch on:
Press the orange button once. The Gamma torch will fire up in the mode it was last used (either in the bright 1W LED or 5mm LED mode).
2. Cycle through the settings of a mode:
Press the switch again to step through each setting of the currently selected mode.
3. Toggle between modes:
To change modes turn Gamma on and then press and hold the button for 3 seconds.

1W Mode: High > Low > Strobe > Off
0.5mm LED Mode: White > Green > Red > Red strobe > Off
Red backlight: Red > Strobe > Off



ADJUSTING THE BEAM

Swivel the light unit up and down until you have the desired angle.

ADJUSTING THE STRAPS

There are two parts to the strap; the headband itself and the overhead strap. Adjust both so that when you wiggle your head from side to side the headlamp doesn't fall off. Gamma will fit on most climbing helmets fitted with retaining clips, such as the Petzl Elios or Ecrin Roc. It is also possible to remove the straps completely.

CARE AND CLEANING

After each use check it over, have a look to see it is OK. If it is wet then dry it out thoroughly before storing. If you have been out on the high seas the torch is likely to have salt water in it, give the whole torch a good rinse under a tap, use a mild soap and a toothbrush then dry carefully. If the battery contacts are corroded, remove the corrosion by sanding lightly with a fine-grain emery cloth. The more you scratch the lens the worse the light will appear.

FAULT FINDER

Check batteries are correctly inserted into the battery compartment
Check batteries have enough power
Check all battery terminal contacts for corrosion and clean if necessary

SUITABLE USE

Gamma is not sold as a waterproof torch however we have found that in most normal outdoor conditions (including rain sleet and generally awful weather) it will work. If using it in the cold expect lower power and try to keep the batteries as warm as possible. As with all things you look after it, it will look after you. Not recommended for extreme use such as caving.

A note on batteries: Gamma has not been designed to work with lithium or rechargeable batteries. Lithium batteries have a high output during discharge which means they can cause the torch to overheat and possibly damage electronics and LEDs. We recommend using a good quality alkaline battery such as Energizer or Duracell. Cheap batteries are more likely to leak and leave a gooey mess on the contacts.

FEATURES

Two modes - 1W LED or 5mm LEDs.
Instant off - from any mode.
Orange button - single multi operation button.
Green and Red LEDs - for night vision.
Pivotable head unit - give your neck a rest.
Emergency strobe mode - attract attention.
Adjustable elastic headband - because we all have different sized heads.
Water resistant - that doesn't mean waterproof to 10m!
Batteries included - and they are Duracell.
Red light - on battery pack with strobe mode.

SPECIFICATION

1 x 1W Luxeon LED (up to 51 lumens)
3 x 5mm LED's Red, White, Green (1.8 lumens)
Weight: 118g with batteries
Batteries: 3 x 1.5V AAA alkaline (included)

BATTERY LIFE

1W LED: 10hrs HIGH [Maximum Output: 4hrs]
1W LED: 20hrs LOW
1W LED: 25hrs STROBE
5mm LED: 80hrs
Red strobe light: 160hrs

ALPKIT.COM
PRODUCT INFORMATION

Gamma is a small, lightweight headtorch ideal for light trekking, backpacking, mountaineering, reading in the tent, camping or any old household chore. Gamma is surprisingly bright considering its small size.

updated: 24/02/2009