

FIGFOUR SAFETY ADVICE

Figfour is a training aid designed for progression: it is not intended to, and does not, provide safety or protection against falls from height. The tools are designed for use on indoor climbing walls by climbers who know how to use them and recognise the situations appropriate for their use.

The Figfour components are designed for ease of use and can be put together without additional tools. Users should inspect the tools before each use and ensure both bolts are tight and shafts and loops are undamaged.

When top-roping it is recommended that Figfour is attached to your rope via a cord or lanyard of an appropriate length. This can be attached through the hole at the end of the shaft. Lead climbing with lanyards can be dangerous and we do not recommend you use Figfour for leading. Falling directly onto the lanyard could generate a shock load with a high fall factor which could cause injury. Do not use lanyards for hanging or resting on your tools.

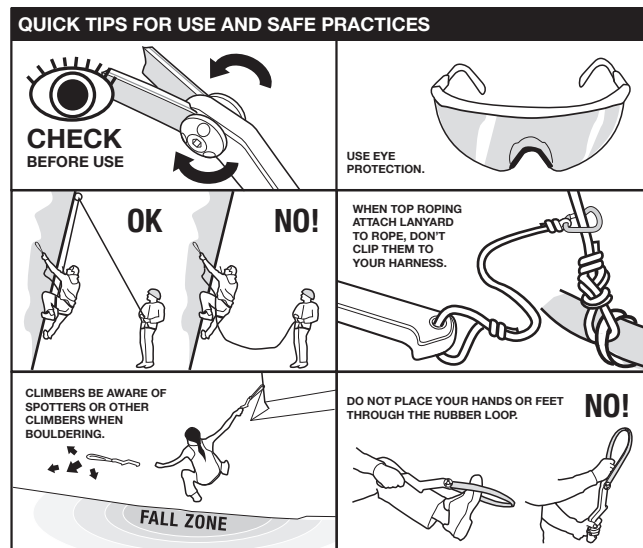
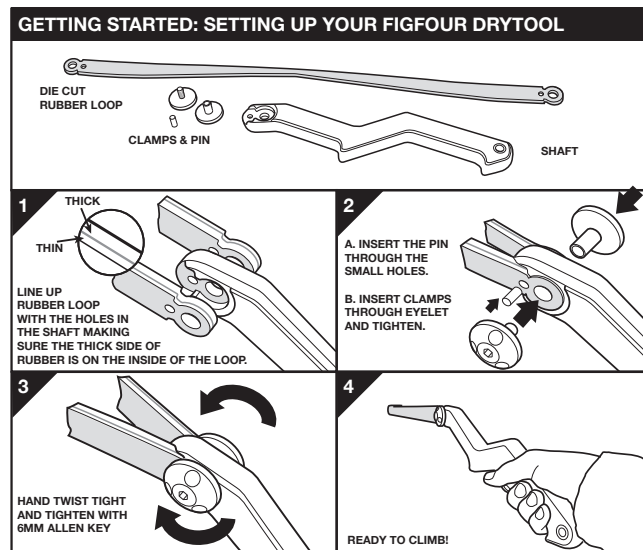
General Use

- Do not attach wrist leashes to the tools.
- Do not store the tools wet, or in a wet or humid environment.
- Remember that holds can spin and break.
- Remember that loops could fail unexpectedly.
- Check clamps are tight before each route/problem.
- Visually inspect shafts and loops for damage before each session and replace if necessary.
- Be aware of the danger of a dropped tool.
- Do not place hands or feet through the rubber loops.
- When top-roping ensure your belayer keeps a tight top rope.
- Do not leave tools on mats between problems or routes.
- We recommend wearing suitable eye protection when using the tools.
- Do not use the shafts for torquing.

! Figfour is designed for progression only. It is not a safety device. Do not use it to create a belay and do not use it for protection.

Warning

Users must recognise that climbing and mountaineering are activities with a high danger of personal injury or death, both outdoors and indoors. Participants in these activities should be aware of, and accept, these risks and be responsible for their own actions and involvement. Whoever uses Alpkit products must be technically competent and possess appropriate cautionary know-how. Each climber must personally assume responsibility for risks resulting from improper use of Alpkit products. The materials do not last forever, they will deteriorate with use and abuse: check your tools before every use and do not hesitate to replace worn or broken equipment.



! FIGFOUR AND CLIMBING WALLS
ASK BEFORE YOU USE YOUR FIGFOUR TOOLS ON YOUR LOCAL CLIMBING WALL. ADDITIONAL SAFETY ADVICE FOR WALLS CAN BE DOWNLOADED FROM: WWW.ALPKIT.COM/DRYICE



For more information about where you can use your Figfour tools, images, training tips or to find a wall that already has a set to hire visit: www.alpkit.com/dryice

© Copyright 2010

Additional support can be found on the Alpkit website. www.alpkit.com/support

Alpkit Ltd
Ropewalk Industrial Estate
Ilkeston
DE7 5HX
United Kingdom

Tel: 0115 932 5050

ALPKIT.COM

Example Risk Assessment for Figfour Dry Tooling Sessions

Hazard	Who is at risk	Probability	Potential Severity	Precautions	Action
It is assumed that a risk assessment has been carried out by the wall hosting the session for bouldering or top-roped climbing and its precautions observed during Figfour sessions.					
Hold breaking/ spinning	Climber	Medium	Low	Ongoing maintenance of holds by centre staff, holds removed/tightened as soon as they become unusable/loose. Eye protection to be worn by climbers.	Staff
Fall from height	Climber	High	Low	Tools only to be used on designated climbing wall above matting or roped as appropriate. Standard safety procedures for equipment and belaying must be observed.	Climber
Tool slipping off the hold	Climber / spectator	Medium	Medium	Climbers should be warned of the risk, be encouraged to climb in control and be aware of the potential for unexpected falls at all times. Eye protection to be worn.	Climber
Falling on to tool	Climber	Medium	High	Climbers are instructed to take care and be responsible when using tools. Staff will also be vigilant and shall provide advice if needed. Tools should not be placed or held behind the body or left on matting when not in use.	Staff/ climber
Dropped tool falling on to person	Climber/ spectator	Medium	High	Climbers should be warned of the danger, no spotting should be provided and spectators must always be at a safe distance from climber.	Staff/ climber
Falling on to mats	Climber	High	Low	Climbers should check fall zone for hazards before climbing. Staff should make sure mats are in the right place and have no gaps.	Staff/ climber
Hold popping though the ply	Climber	Medium	Low	Climbers should be warned of the risk, be encouraged to climb in control and be aware of the potential for unexpected falls at all times.	Staff
Muscle strains	Climber	High	Medium	Climbers should warm up thoroughly before using tools.	Climber
Lead climbing with lanyards	Climber	Medium	High	Climbers should be warned of the danger of shock loading in the event of a fall. Figfour should not be made available for leading.	Staff/ climber
Dropped tool when top roping	Climber/ spectator	Medium	High	Climbers should be warned of the danger, bungee / lanyard leashes should be fitted and climbers instructed in their proper use.	Staff/ climber
Strike injury for spectators	Climber/ spectator	Medium	High	Climbers should be warned of the danger, no spotting should be provided and spectators must always be at a safe distance from climber.	Staff/ climber
Failure of loop or shaft of tool in use	Climber/ spectator	Medium	Low	Climbers instructed in maintenance of tools clamps and straps will be removed/replaced/tightened as soon as they become worn/loose.	Staff/ climber

ADDITIONAL SAFETY ADVICE FOR WALLS

Wall managers should be aware that Figfour has some specific safety considerations over and above normal wall activities. This document outlines some of these considerations and includes a sample risk assessment.

USING FIGFOUR AT YOUR WALL

You do not need any special holds to use Figfour, however in general holds with a larger and more positive lip are easier to use. Jugs can be used on overhanging faces for powerful moves or rounded holds can be used on slabs for sketchy, balancey problems.

It is likely that you will be able to use Figfour on most of your current routes, however to get the most out of Figfour tools you may choose to set specific routes.

Figfour can be used in a bouldering or top-roping environment. Please read the following safety advice to help you decide how best to use Figfour at your wall.

Figfour should be used in a calm and controlled environment. Ensure that there is ample space around any climbers using the tools, they will need more space than normal due to the length of the tools and the risk of dropping / throwing them. Other wall users should be alert to the risk of falling climbers and tools.

BMC Participation Statement
The BMC recognises that climbing and mountaineering are activities with a danger of personal injury or death. Participants in these activities should be aware of and accept these risks and be responsible for their own actions and involvement.

SAFETY ADVICE

Although Figfour has no sharp edges like a traditional ice climbing axe it can still cause injury if it slips off a hold and strikes the climber in the face or in the body. Due to the nature of dry tooling climbers can fall without warning, in an awkward position and with heavy tools in their hands.

Personal protection

Climbers should be encouraged to wear appropriate safety glasses.

Climbers should be aware that tools can fall on them.

Do not use wrist loops.

Do not leave tools on mats during use.

Climbers may prefer to wear gloves.

Bouldering

Figfour should always be used in a controlled environment. There is a high risk of climbers releasing the tools when they fall so a larger than normal landing zone should be created. Spectators should pay special attention to falling axes or getting hit by swinging tools. Climbers using advanced moves such as Figures of Four should be aware that they could fall in very awkward positions, onto their tools or get feet and hands trapped in the rubber loops.

Top-roping

There is a risk of climbers dropping Figfour on other wall users. For this reason we recommend attaching a lanyard. These lanyards should be clipped into the rope above the tie-in point and long enough so that they do not restrict movement. Belayers should be made aware of this risk and keep a tight rope at all times.

Wall managers may decide to separate climbers using Figfour from climbers on adjacent routes due to the risk of being struck by falling tools.

We strongly recommend partnering up with an actual belayer when using Figfour rather than an auto-belay device.

Leading

Figfour is not designed for leading.

Maintenance

Figfour is a low maintenance product. Before each use check that the clamps are tight. These can be clasped between the rubber loop for better grip and tightened by hand. Check the rubber loop is in good condition, remove the clamps to check the condition of the eyelert and if your loops are frayed they can be cleaned up by running a hot blade along the edge of the loop.



This information is provided as an example only and is not meant to be comprehensive or definitive. If you are intending to use Figfour at your own climbing wall you should carry out a full risk assessment and be aware of the potential dangers to Figfour users and other wall users.

This information can be downloaded from:
www.alpkit.com/dryice

© Copyright 2010

Additional support can be found on the Alpkit website.
www.alpkit.com/support

Alpkit Ltd
Ropewalk Industrial Estate
Ilkeston
DE7 5HX
United Kingdom
Tel: 0115 922 5050

ALPKIT.COM



This information is provided as an introduction to the use of Figfour tools at a public climbing wall. If you are intending to use Figfour at your own climbing wall you should carry out a full risk assessment and be aware of the potential dangers to Figfour users and other wall users.

This information can be downloaded from:
www.alpkit.com/dryice

© Copyright 2010

Additional support can be found on the Alpkit website.
www.alpkit.com/support

Alpkit Ltd
Ropewalk Industrial Estate
Ilkeston
DE7 5HX
United Kingdom
Tel: 0115 922 5050

ALPKIT.COM